



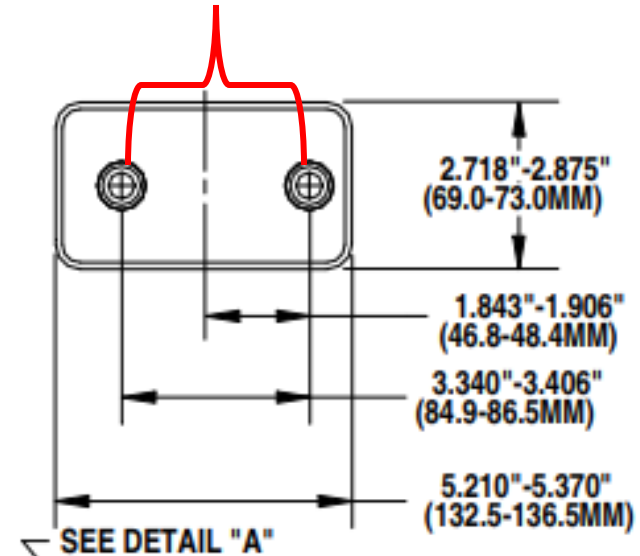
# 926C Lantern Battery – Terminal Issue

# 926C Lantern Battery – Terminal Width out of Specification

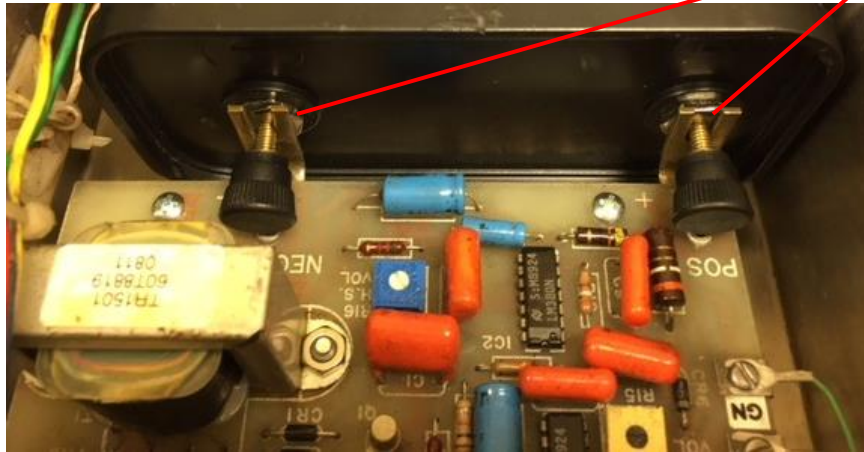
*There is a manufacturing error with the 926C 12V lantern battery. The terminal spacing is approximately .035" too narrow, and will therefore not connect properly in devices that have fixed terminal connections.*



.035" too narrow for fixed terminal connection



# Lantern Fixed vs Flexible Connections



Fixed Connection

Flexible Connection  
(wire leads with clip)

